

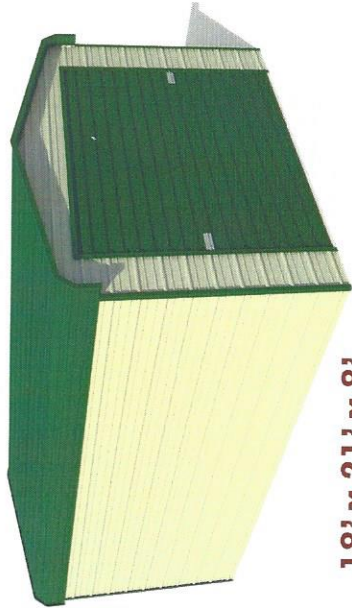
# GARAGES

## Integrity

CARPORTS

# FULLY ENCLOSED BUILDINGS

Base price is for top only and includes **FREE INSTALLATION** on your level land. Customer will be required to provide a lift for all buildings over 12' tall.



**18' x 21' x 8'**

14 GA, 2 1/2" Square Tubing

**REGULAR \$2690.00**

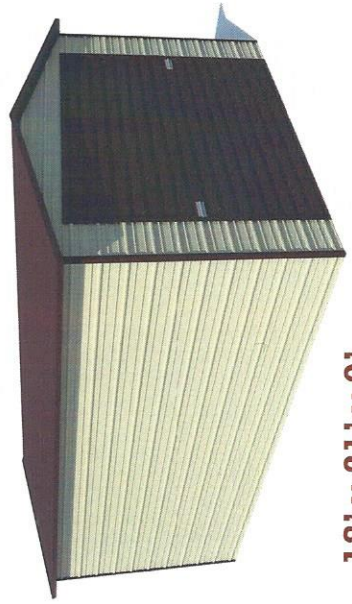
**Rebar Anchors**  
(ground installation)

**or Cement Anchors**  
Included in Price

NOTE: FRAME IS 1 FT SHORTER THAN ROOF, LENGTH WISE

Garage doors installed on side add \$100 per opening and building must be 1' taller than door.

STANDARD Height 6'



**18' x 21' x 9'**

14 GA, 2 1/2" Square Tubing

**BOXED EAVE \$2925.00**

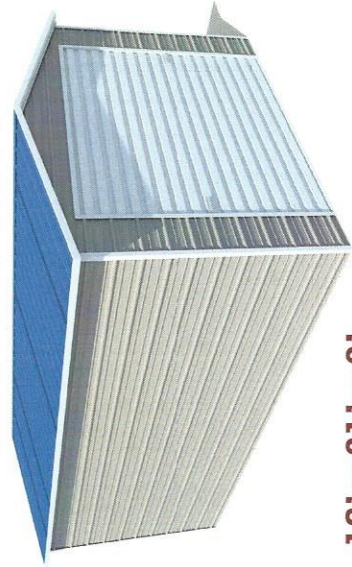
**Land / Cement**

• We recommend cement be 1' shorter than building roof length.

• Cement must be level and square corner to corner.

• Return trip fees will be applied if building is not installed.

LAND/CEMENT MUST BE LEVEL



**18' x 21' x 9'**

14 GA, 2 1/2" Square Tubing

**VERTICAL \$3225.00**

**Waiver Policy**

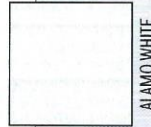
• We strongly recommend all buildings over 36' long to be vertical roof style.

• Customer must sign waiver on regular or boxed eave style longer than 36' due to potential issues at seams.

• We are not responsible for leaks under base rails.

METALMAX WAIVER POLICY

All Prices Subject to Change without Notice.



Note: Metal colors may vary from those displayed in brochure. Color samples available upon request. We are not responsible for colors not matching brochure.

